



A NEW WAVE OF BEACHFRONT BUILDINGS

Unique composite panel technology & timber frame construction



Bespoke design & unique technology



Portable retail unit design

As the leading beachfront building supplier in the UK, our builds are like nothing else in the industry.

We specialise in the design and manufacture of modern-day beach huts, mobile shops/kiosks, lifeguard stations, all the way up to residential chalets complete with fitted kitchens and bathrooms – and everything in-between.

As trusted supplier to many high-profile clients, including county councils; holiday parks; leisure academies; and the RNLI (Royal National Lifeboat Institution), our product and service is well-proven.

Based on a 55,000 sq ft manufacturing site in the Dorset countryside, our extensive facilities provide a unique and enjoyable workplace for our handpicked,

highly-skilled designers and engineers who create our award-winning products. Each project is designed and built at our premises under controlled factory conditions, then transported to site – either complete or in kit form – for our onsite build teams to install.

Uncompromising ISO 9001 approved quality standards are fused with the latest technologies. Constructed from heavy-duty timber frame or our own revolutionary composite panel technology for ultimate durability, or a combination of the two depending on your needs and budget, our bespoke buildings outlive and outperform anything else on the market.

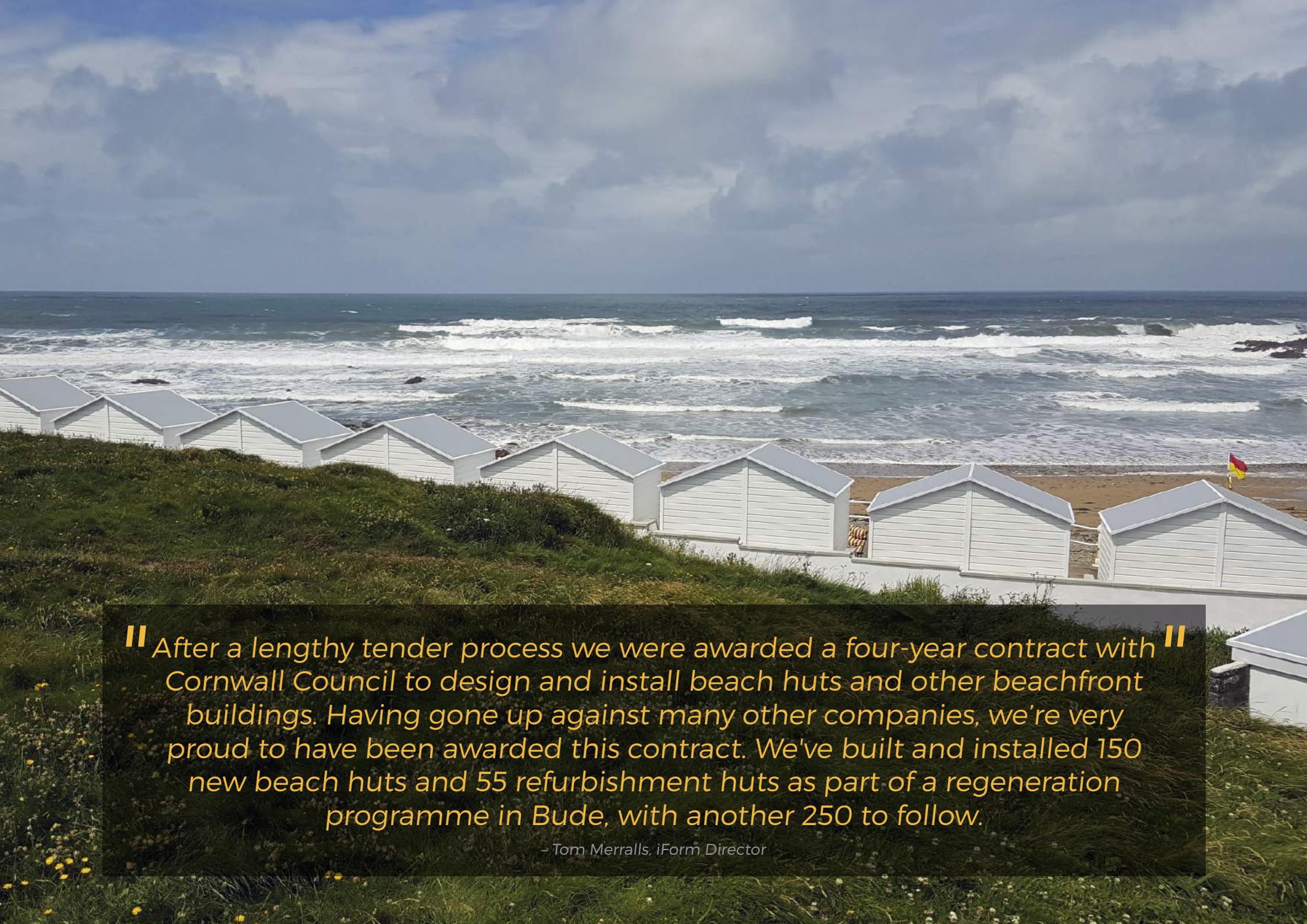
"iForm designed and built modular accommodation units for our sailing school in Poole, Dorset. The design, service and build quality was first-rate. In fact, we were so impressed that we have placed another order."

– Peter Gordon, Rockley Watersports

The UK's no.1
beach hut
supplier



Composite Wave Roof beach hut modules



"After a lengthy tender process we were awarded a four-year contract with Cornwall Council to design and install beach huts and other beachfront buildings. Having gone up against many other companies, we're very proud to have been awarded this contract. We've built and installed 150 new beach huts and 55 refurbishment huts as part of a regeneration programme in Bude, with another 250 to follow."

- Tom Merralls, iForm Director



TRUSTED SUPPLIER TO RNLI

We have an exclusive contract with the RNLI (Royal National Lifeboat Institution) to supply Lifeguard Units, Support Centres, Retail Units and Kiosks – with over 150 buildings in some of the harshest coastal locations all around the UK, our product and service is well-proven.



DON'T LET THIS HAPPEN TO YOUR BEACH HUT OR OTHER BEACHFRONT BUILDING ...

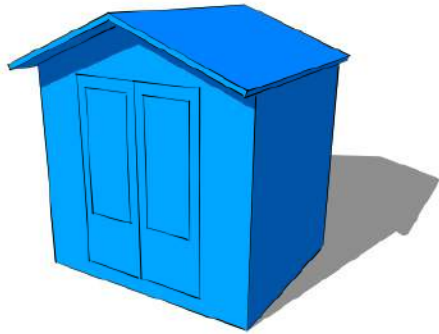
... OUR BUILDS ARE STILL STANDING STRONG

**DESIGNED AND
BUILT BY iFORM**

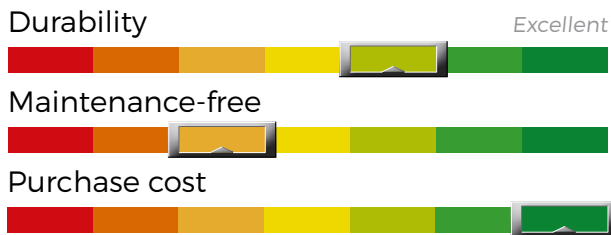


Build types

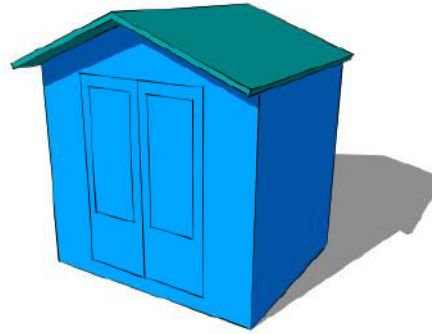
We offer bespoke beachfront buildings in a choice of three build types depending on your needs, budget and site requirements – a choice and flexibility you won't find elsewhere ...



1 TIMBER FRAME



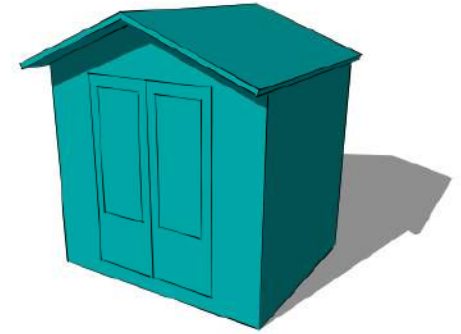
Industry-leading timber buildings designed using heavy-duty timber frame and high-quality, pressure-treated, tanalised timbers.



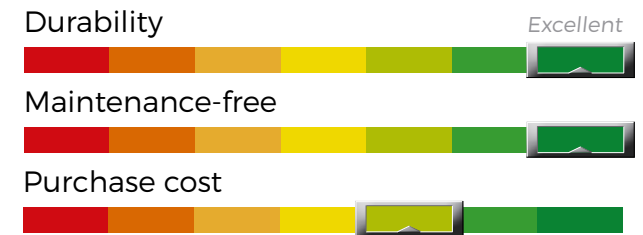
2 TIMBER/COMPOSITE MIX



Combine the reduced outlay of timber frame with the added performance benefits that our unique composite panel technology offers in elements such as the roof.



3 COMPOSITE TECHNOLOGY



Our composite panel technology is a high-performance building system, offering superior insulation, structural strength and durability over traditional construction methods or systems.

1 Timber frame

Our industry-leading timber-designed beachfront buildings are hand-built to perfection. They provide a more economical option without compromising on quality. We use the highest quality 3x2in and 4x2in tanalised timber sourced from FSC accredited forests to construct the heavy-duty timber frame. The timber cladding is available in a range of profiles, unlimited colours, and we can design a custom profile or match existing/previous designs. All timber is pressure-treated to protect against fungal decay, mould and insect infestation – these are as durable as a timber build can be.

For a more luxurious offering where guests would stay overnight or longer, we provide timber frame buildings to full residential standard; meeting or exceeding UK building regulations. These buildings can feature log burners or other heating systems to be enjoyed all-year round, dramatically extending the rental season.

Timber frame builds are a good solution for sites with restricted access where dropping in completed prefabricated units is unfeasible. In this instance we can design and manufacture buildings in specialist timber frame flat-pack kit form for quick assembly in-situ.



Timber/ composite mix

Combine the reduced outlay of timber with the added performance benefits that our unique composite panel technology brings. By incorporating composite elements previously unreachable levels of durability, insulation and waterproofing can be achieved, completely maintenance-free. The most popular element to upgrade is the roof. Our composite grp (fiberglass)-faced panels are produced in large sections without joins for ultimate reliability; the roofs can be mono-pitch, dual-pitch, or shaped – like our curved Wave Roof design.



The 150 new beach huts we designed and installed at Bude are of a heavy-duty timber frame construction with timber shiplap cladding to a specific profile, treated with a colour-free stain and painted various colours. All feature composite GRP (fibreglass) roofs, which are completely maintenance-free. The doors were specifically manufactured for this project with galvanised and stainless steel fixtures and fittings, plus high impact-resistant polycarbonate windows.

3 Revolutionary composite technology

Exterior panel surface is smooth white GRP as standard, but can be a choice of RAL colours

Wave Roof design; perfect for seafront locations. One-piece composite panel roof with GRP moulded roof cappings

High-impact resistant polycarbonate windows (anti-graffiti window film available in clear, tinted or reflective)

Fully bonded, waterproof interior. Wipe-clean smooth white walls and ceiling. Slip-resistant flooring – sand and water through use can be swept/washed out

Marine-grade 316 stainless steel frames and fittings

Composite wood effect cladding system in choice of RAL colour

Designed to last

- No shrinking, warping, rotting or rusting
- Non-flammable materials, no vulnerable gaps
 - Windows can withstand a hammer blow
- Graffiti can be removed from the GRP surface
 - Composite cladding for a timber aesthetic



Our revolutionary composite panel technology is unique to us worldwide. It enables us to offer a range of portable beachfront buildings designed to last 20 or more years in a coastal environment, maintenance-free

Composite is a high-performance building system, offering superior insulation, structural strength and durability over traditional construction methods or systems. Manufactured up to 10m x 3m without joins, each panel is bonded for rigidity, impact resistance and water tightness. There's no warping, shrinking, rotting or colour fading, and interesting shapes can be created like our Wave Roof design.

We first introduced our revolutionary composite panel technology more than 30 years ago. It offers maximum durability in coastal locations, and is totally unique to us. The majority of buildings we supply to the RNLI under contract are composite, so you can be rest-assured in terms of the quality and level of service we provide.

We manufacture the panels in various thicknesses and layups depending on the intended application. Whole panels are bonded together to form the floors, walls and roofs. This creates a super strong, lightweight, self-supporting structure.

The outer surfaces of our bonded composite panel consist of layers of smooth, highly-durable, wipe-clean GRP (fiberglass). These surfaces are white as standard, and we offer a range of RAL colour options. The colour runs throughout the GRP and won't fade with sun exposure. The smooth exterior can also be wrapped in vinyl graphics for branding or marketing purposes, or if you're looking for that traditional timber aesthetic, we've developed an effective composite cladding system.



Composite RNLI Lifeguard Unit

Arun County Council required 100 new beach huts that would blend in with some existing traditional timber huts along Littlehampton promenade. Low-maintenance and excellent durability was key. Having won the tender, we supplied fully-composite beach huts in a series of colourways featuring our composite wood-effect cladding system with colour-matching roof capping.



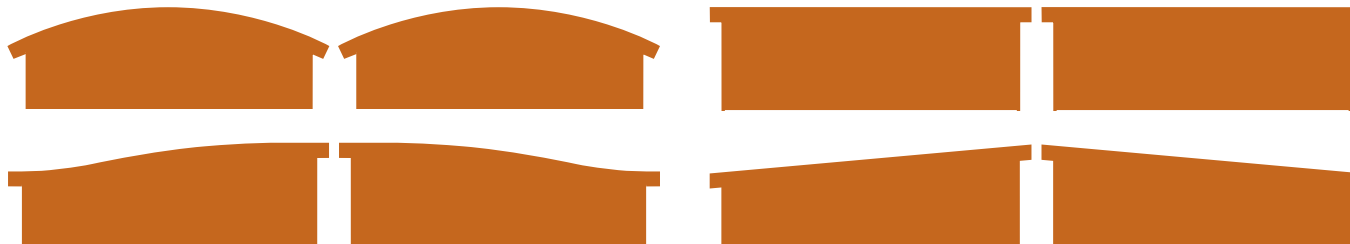
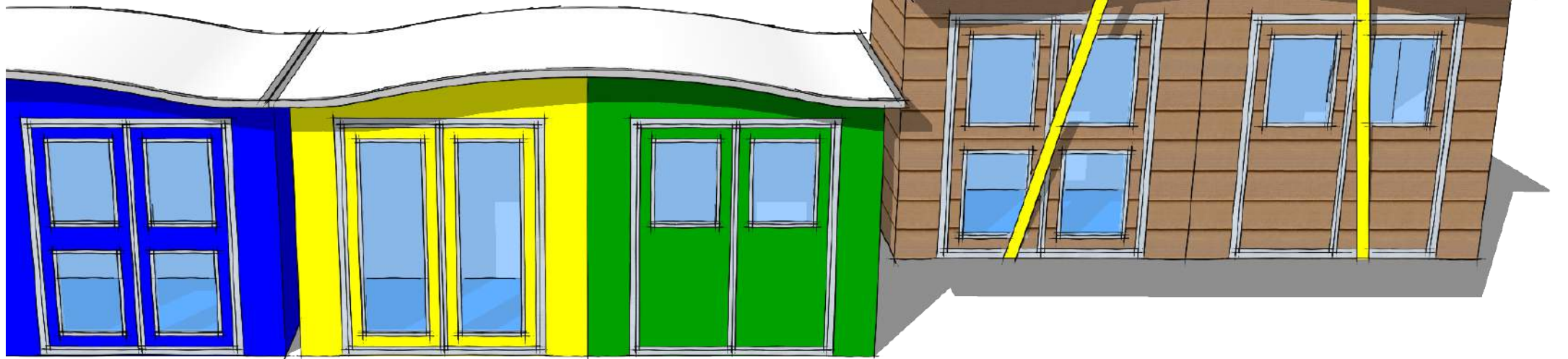
- ✓ **Well-suited to coastal locations**
- ✓ **Maintenance-free**
- ✓ **Lightweight, portable & modular**

This unique composite panel technology offers a design flexibility not available with traditional construction methods – complex shapes and angles can be created without the need for additional supports or frames, and the material's modular size and spanning capabilities can be exploited at concept stage to provide a bespoke design that maximises usable space.

Modular design

We can offer individual huts or a modular design where two or more huts share a roof panel with dividing walls. The number of gaps between huts is greatly reduced, making the most of the available plot size while maximising internal space. Less material is required, so cost is reduced too. It's a very effective way to build.

**PORTABLE BUILDINGS
OFFER GREAT FLEXIBILITY
- MOVE THEM TO
DIFFERENT LOCATIONS
TO SUIT, WITHOUT
THE NEED FOR
FOUNDATIONS ...**



The roofs are formed from single composite panels covering one or more huts, which means no joins and no leaks. There are many roof shape options, including our Wave Roof design – perfect by the sea.

From standard beach hut to full residential beach chalet/lodge ...

We have the skills and experience to match whatever needs and aspirations you have for your beachfront buildings. From simple timber frame beach huts, to larger, unique composite buildings, up to full residential builds that meet buildings regulations for overnight or holiday stays, and everything in-between. There are some example options illustrated below, although the possibilities are endless ...



Solar/mains power



TV & integrated audio



Mood lighting



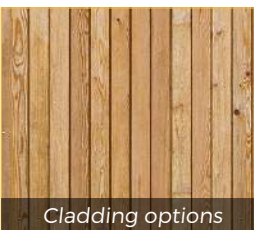
Roof terrace/veranda



Fire pit/log burner



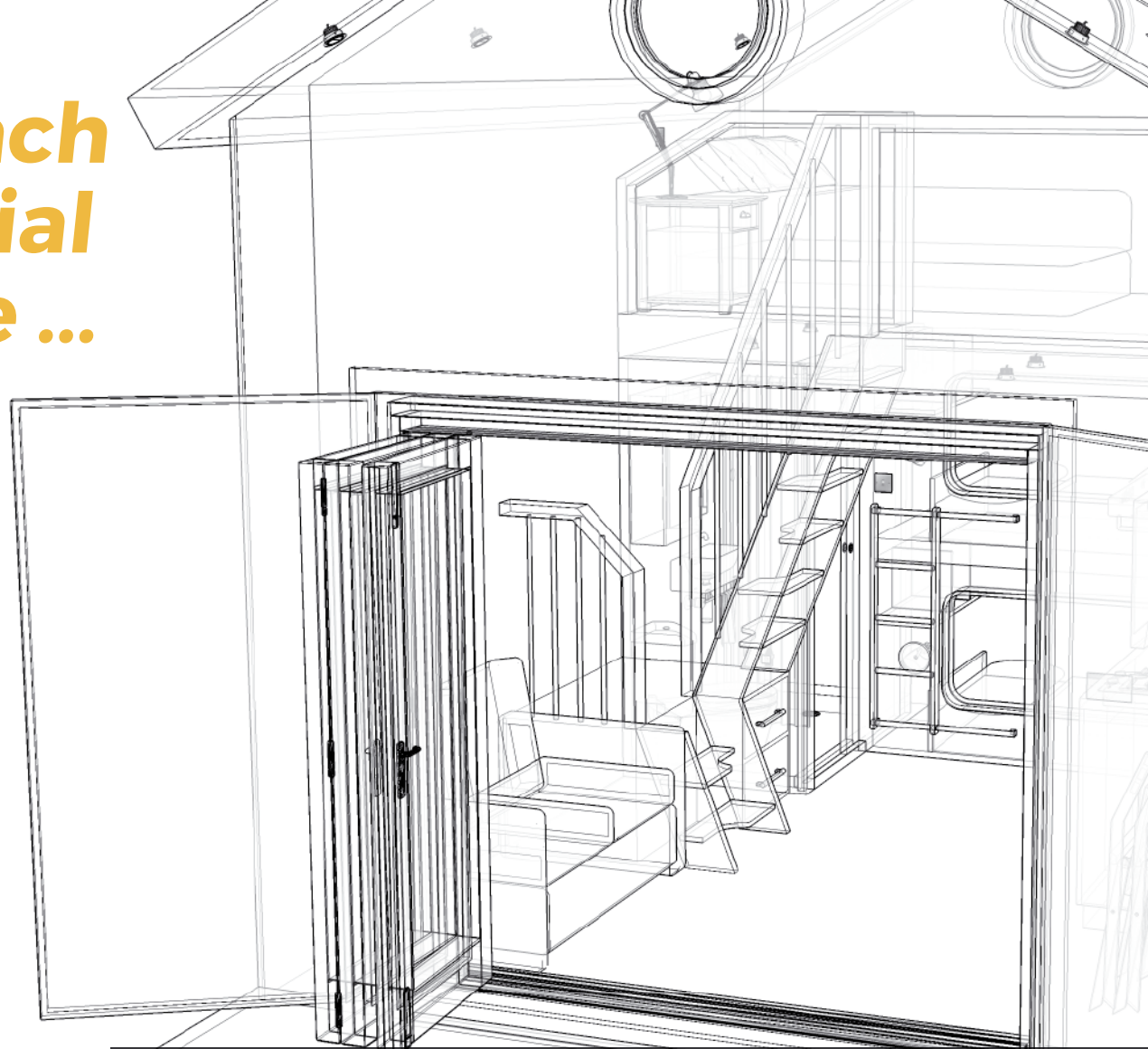
Living areas



Cladding options



Advertising



Our timber frame residential builds meet or exceed UK building regulations and can be single-storey, mezzanine or two-storey. Fully insulated with double or triple glazing for all-year round enjoyment, they feature beautiful siberian larch cladding on the exterior and a plasterboard finish inline with modern houses on the interior. The outside of the frame can also be cladded in brick, block and render, stone, tiles, etc to suit.



The image shows a modern building with large glass windows and a balcony, integrated into a stone wall on a hillside. The building has a light-colored, possibly composite or timber, exterior. The balcony is supported by metal brackets. The stone wall is made of large, irregular blocks. The building is situated on a hillside with trees in the background. The overall scene is a blend of modern architecture and traditional stone masonry.

DESIGN

Buildings are designed and manufactured using our composite panel technology, heavy-duty timber frame or a composite/timber mix, depending on your needs and budget. Each project is bespoke and tailored to the requirements of the site, the intended use and the initial design brief. Designed to any size, style and spec, our buildings can be portable, modular, maintenance-free, feature anti-vandal elements, blend-in with any existing buildings or make a statement.

The image shows two yellow modular buildings with blue trim around the rooflines and door frames. The building on the right has its door open, revealing a clean, empty interior with yellow walls and a yellow floor. In the foreground, between the two buildings, there are two industrial work lights mounted on a stand. The background is a large industrial building with a corrugated metal roof and walls.

MANUFACTURE

Our buildings are constructed under factory-controlled conditions by highly-skilled build teams. This ensures great build quality, reduced wastage and means that your project runs to schedule. We take each building to fully completed stage (including finished interior fit-out where possible) inside our workshops to ensure they meet exacting quality standards before going to site.



DELIVERY & INSTALL

We deliver our buildings to site either as completed units or in specialist flat-pack kit form for assembly by our experienced build teams. Completed units are simply lifted into position and connected to services where required. This means minimal on-site build/installation time and disruption, and your new building/s can be enjoyed straightaway.



Mobile shop unit with vinyl graphic wrap



Composite panel lookout facility for MOD



Timber frame residential to UK building regs



Composite clad Lifeguard Unit



Modular accommodation for students



Timber frame glamping pod



Portable composite RNLI Lifeguard Units

Bespoke buildings for any application ...

Tell us about your project and
see what we can offer you

w. www.iformuk.com

e. info@iformuk.com

t. 01258 837789

iForm, Deverel Farm, Milborne St Andrew, Dorset, DT11 0HX

© iForm | All rights reserved

iForm is a trading name of MH Engineering Services Ltd
Registered No. 03465713. Registered in England.

